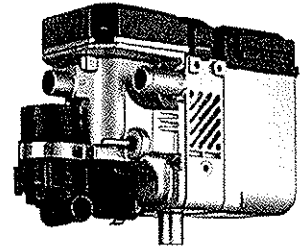


Webasto Heater Review



What is a Webasto heater?

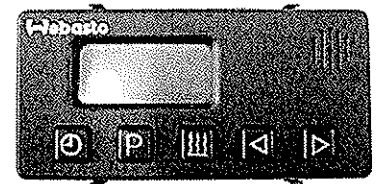
- It heats engine coolant while engine is not running in cold conditions so that engine can be up to operating temp as soon as you turn the key.
- Allows for the convenience of not having to plug the bus in or start the bus early in cold weather.
- It saves fuel.
- Reduces engine wear.

How does it work?

- Diesel fuel fired, once ignited it runs on diesel fuel from the bus fuel tank.
- A circulation pump, circulates coolant through the engine to keep it warm.

What does the heater timer do?

- Displays current time (military)
- It tells the heater how long to run – (10 min. – 120 min.)
- It tells the heater when to turn on



What does the heater timer not do.

- It does not automatically turn the heater on at the same time each day unless YOU tell it what day and time to turn on in advance.
- Timer can only be set for 3 different times in advance (up to 7 days in advance) of fire time.
- Timer must be set no sooner than 7 days prior
- Timer works off of a clock which is military time – CLOCK MUST BE SET to proper time in order for the program to work.

Can I manually turn the heater on without the timer?

- Yes – the red button with the squiggly line manually turns the heater on and off (press and hold)

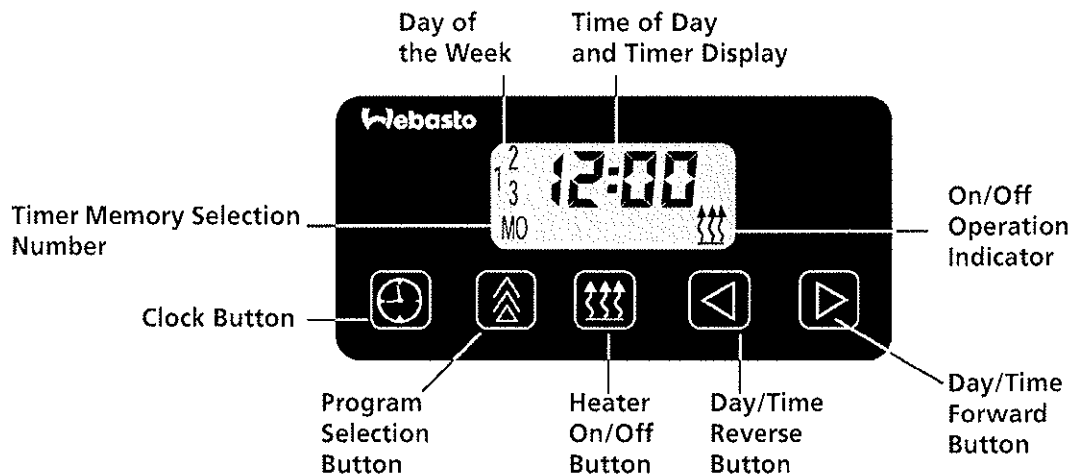
How do I know if the heater is working?

- The red squiggly line button and the clock illuminate when heater is running

Why does the heater not turn on sometimes if I press the button or turn off sooner than it should.

- If the engine is up to operational coolant temp the heater will not run

Operating the Coolant Heater with the OPTIONAL 7-Day Digital Timer



Setting the Time and Day of the Week	
1	Press and hold for 2 seconds. Time of day will start flashing.
2	Press Or to adjust time setting. Once time is set, release button. Flashing will stop after 5 seconds and day of the week will begin flashing.
3	Press Or to select the day of the week. Once set, wait for flashing to stop.

Operating the Heater in Manual Mode	
1	Press to activate the heater. The operation indicator will light up.
2	Press to deactivate the heater. The operation indicator will go out.

Programming Heater Starting Times	
1	Press to begin timer programming. The timer memory selection number starts flashing. Continue to press button until the desired memory selection number (1, 2 or 3) is visible.
2	Press Or to adjust heater start time setting. Once start time is set, release button. Flashing will stop after 5 seconds and day of the week will begin flashing.
3	Press Or to select day of the week. Once set, wait for flashing to stop. The heater will start on the time and day selected. To program the other two memory locations, repeat the above 3 steps for each location.

Recalling or Cancelling a Programmed Starting Times	
1	Press to cycle through the selection numbers. Any one of the three memory numbers can be activated each time the button is pressed. After selecting the memory number you desire, you can recall or change the day and time setting if desired by repeating steps 1, 2 and 3 under "Programming Heater Starting Times".
2	Press repeatedly until no memory location number is visible on the timer display.

Startup Sequence / Preheat Sequence with OPTIONAL Timer

To further ensure a warm and comfortable interior temperature, the following preheating and operational sequence is recommended:

1. Preheat the vehicles engine using **ONLY** the Webasto heater (Engine Off).
2. Start the vehicles engine.
 - **DO NOT** leave engine idling with all heater fans in the 'ON' position. Doing so will decrease the amount of heat available.
3. Start the driving route, leaving the Webasto heater in the 'ON' position.

**ATTENTION**

The Webasto heater has a start up and shut down procedure that takes several minutes to complete. Repeatedly turning the Webasto heater on and off will result in a malfunction, and can potentially damage the heater.